



14 Keith Court Portarlington VIC

4  2  4 

WOW! With a block size of 962m², and unimaginable views of the You Yangs, Melbourne CBD and beyond from both ground and upper levels complete with a beautiful home, there is nothing more to say really except "be quick?!"

This beautifully renovated and extended home has been carefully created and adjusted over time to maximize the unbelievable views from the open plan living, dining, kitchen area as well as the master bedroom. The 3 separate first floor decks have been cleverly planned to enable options depending on which way the wind may blow, with sliding doors, screening and on one deck fixed roof and windows ensures that entertaining is an all season affair.

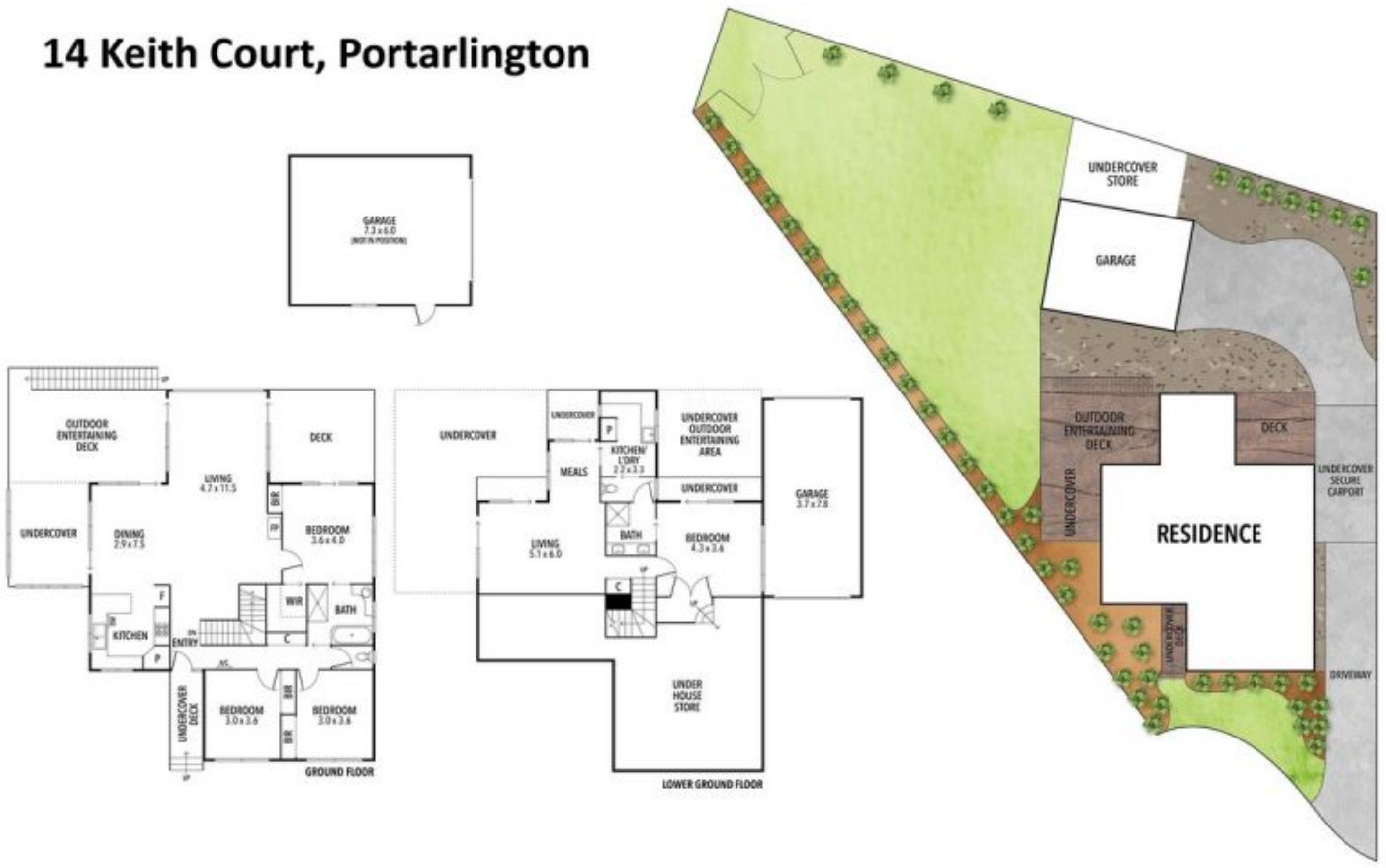
[For full version visit the website](#)

Type : House
Price : \$ 1,425,000
Land Size : 962 sqm
View : <https://www.huntersrealestate.com.au/sale/vic/geelong-district/portarlington/residential/house/6780471>



Charlotte Hunter
5259 1103

14 Keith Court, Portarlington



THE ABOVE PLAN IS AN ARTIST'S IMPRESSION ONLY, IT INCLUDES ELEMENTS THAT ARE FOR DISPLAY PURPOSES ONLY AND MAY NOT BE TO SCALE. LANDSCAPING SHOWN IS INDICATIVE ONLY. DIMENSIONS ARE APPROXIMATE.

