



2/95 Smythe Street Portarlington VIC

3  2  2 

This contemporary three-bedroom townhouse offers the utmost convenience, situated just a short walk from the main town centre, pier, and ferry to the docklands. Boasting a modern and generously proportioned layout, this unit offers a perfect blend of comfort and sophistication and is perfect for professional couples, retirees or as a holiday home.

Downstairs, a welcoming family room awaits, complete with air conditioning and ceiling fans, extending to an outdoor area ideal for relaxation and gatherings. Two additional spacious bedrooms provide ample accommodation, accompanied by a main bathroom boasting both a bath and shower.

Ascending to the upper level, you'll find a light-filled, modern kitchen boasting premium features, leading to an

Price : \$ 770,000
Land Size : 203 sqm
View : <https://www.huntersrealestate.com.au/sale/vic/geelong-district/portarlington/residential/townhouse/7918765>

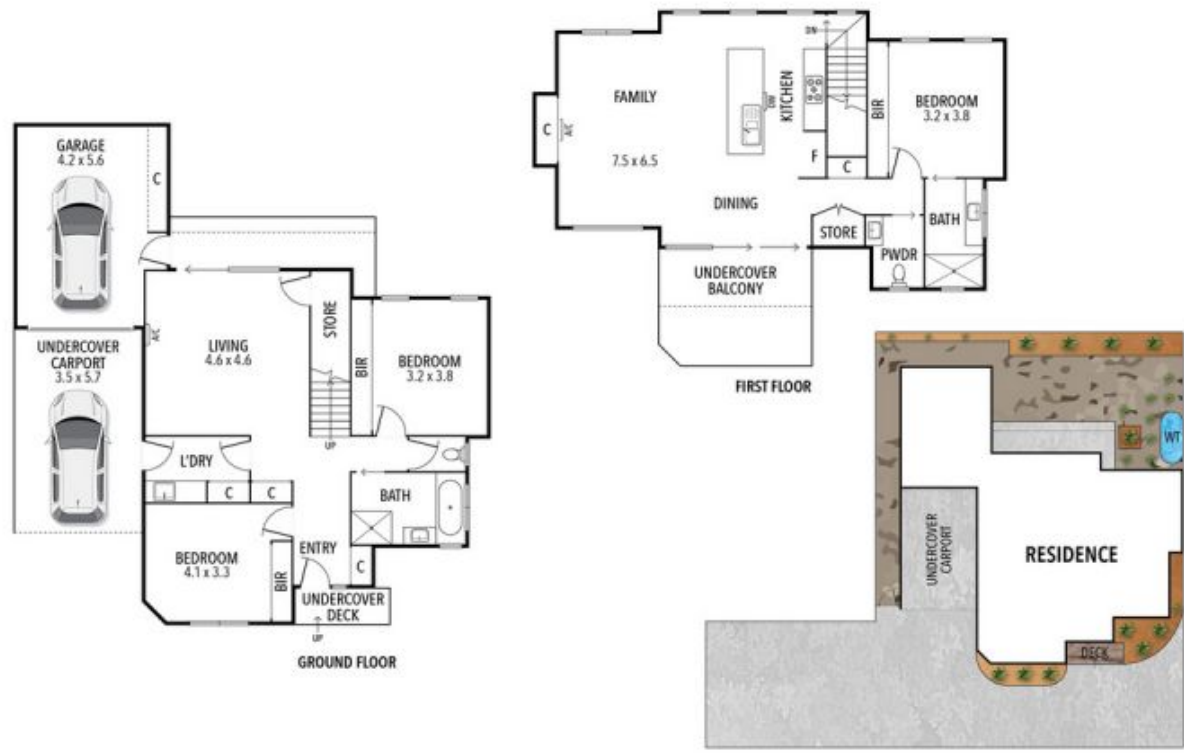


Charlotte Hunter
0488001094



Susan Sprakel
5259 1103

2/95 Smythe Street, Portarlington



THE ABOVE PLAN IS AN ARTIST'S IMPRESSION ONLY, IT INCLUDES ELEMENTS THAT ARE FOR DISPLAY PURPOSES ONLY AND MAY NOT BE TO SCALE.
LANDSCAPING SHOWN IS INDICATIVE ONLY. DIMENSIONS ARE APPROXIMATE.